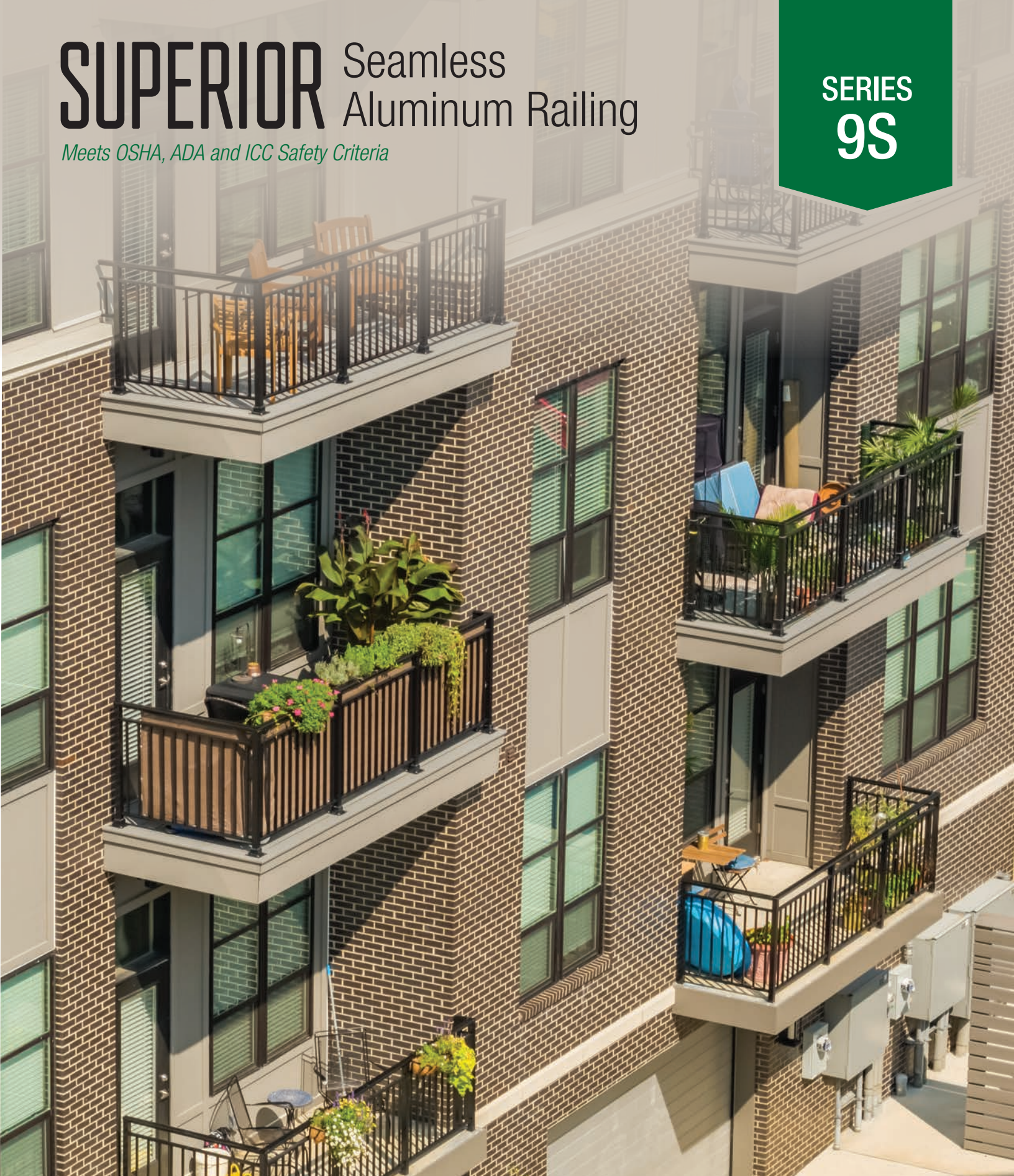


SUPERIOR Seamless Aluminum Railing

Meets OSHA, ADA and ICC Safety Criteria

SERIES
9S



Embracing form and function in a sleek, modern design

SuperiorAluminum.com

SUPERIOR Seamless Aluminum Railing

Embracing form and function in a sleek, modern design.

Superior Series 9S Architectural Aluminum Railing embraces both form and function with it's high-style, modern aesthetics and innovative, sensible design.

The sophisticated and refined railing system features a sleek, continuous top rail, concealed fasteners and seamless transitions around corners, creating a high-end, custom look.

Whether your preference is for the bold, dramatic lines or the practicality of an uninterrupted graspable handrail, Series 9S is an excellent choice for both residential and commercial applications, alike.

Series 9S Railing utilizes all the advantages of aluminum, where strength, durability and no-paint maintenance are key. In addition, the highest quality aluminum alloy extrusions are used to provide maximum strength and support where it's need most – in your installation.

Series 9S Railing is available in any height. Standard heights include 42" for commercial railing and 36" for residential railing.

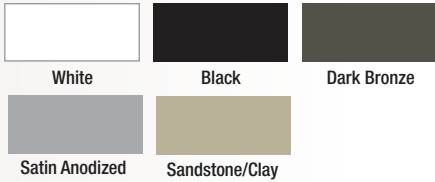
Series 9S Railing can be embedded in concrete, surface mounted or side-mounted, and is factory assembled in lengths up to 18', making for easy, no-hassle installations.



9S Railing: Double Top Rail with Ring Inserts

Finishes

Whether PPG Duracron paint, anodized or duranodic, the smart decorative finishes are guaranteed to endure for years of continued service and maintenance-free.

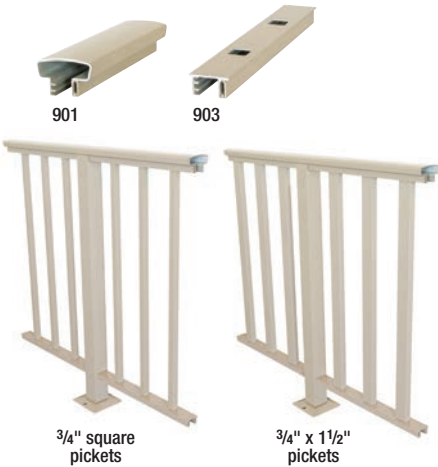


Series 9S Seamless Railing

Standard 9S Railing utilizes 901 top rail (2 1/2" w x 1 5/8" h), 903 bottom rail (1 5/8" w x 3/4" h), 2" square posts and 3/4" square pickets.

Interchangeable Pickets

To customize your look, standard 3/4" pickets can be substituted with 3/4" x 1 1/2" pickets.



Series 9S Railing meets OSHA, ICC and ADA criteria.



9S Railing: Double Top Rail with Ring Inserts

Railing Style Systems



Hand Rail Applications

Superior Series 5 Pipe Railing is used for Series 9S hand rail applications. Pipe rail can be mounted separately or it can be mounted directly to the railing with brackets and a through bolt (see photo inset).



Series 9S Features

Continuous Top Rail

Series 9S Railing features a sleek, continuous top rail, ingeniously designed with concealed fasteners to create a continuous graspable handrail and clean, dramatic lines.



Seamless Rail Transitions

Series 9S Railing seamlessly transitions around corners with no interruption to the top rail surface for continuous smooth lines and a modern, upscale look.



90° Corner Transition

Custom Corner Transition

Note: Custom transition parts can be manufactured in any custom angle to meet your requirements.

Seamless transitions around corners!



90° Corner Transition



Custom Corner Transition

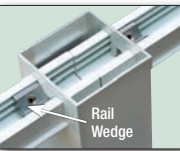
Machined Post Openings

Machined post openings receive center and bottom rails, eliminating the need for brackets, which results in a clean, rigid design with added strength.



Machined Opening

Rail wedges, located in the underside of the rails will ensure proper insertion of 1" inside the post.

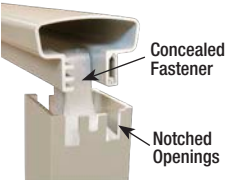


Rail Wedge

Note: If railing is angled horizontally the angle must be specified so the proper openings can be machined into the post.

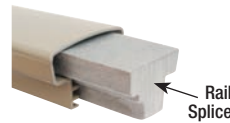
Concealed Hardware

Series 9S Railing is assembled using concealed fasteners that attach to the inside of the top rail. The fasteners slide inside the posts until the top rail rests in the notched openings.



Concealed Fastener

Notched Openings



Rail Splice

A railing splice can also be used to connect top rails more than 18' in length.

Series 9S Railing is also equipped with screw covers, used to conceal picket screws on top and bottom rail assemblies for a clean, streamlined look.



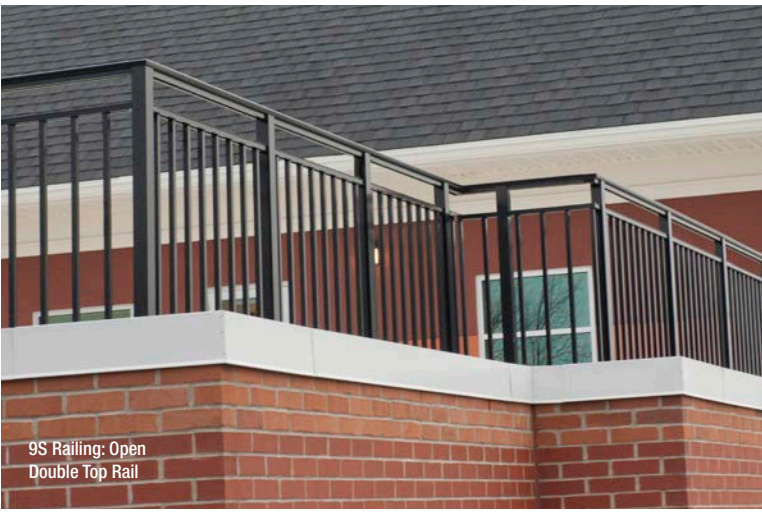
Screw Cover



9S Railing: Double Top Rail with Ring Inserts Side Mounted on a Rooftop



9S Railing: Double Top Rail with Ring Inserts



9S Railing: Open Double Top Rail



9S Railing: Open Double Top Rail

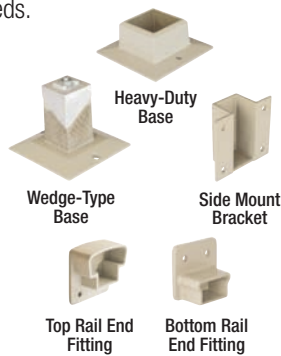


Custom Aluminum Gates

Attractive aluminum gates with standard or custom security locks are available for Series 9S Railing. The durable, welded gates can be designed in any size or configuration and arrive completely assembled for easy installation. Please call Superior Aluminum to discuss your needs.

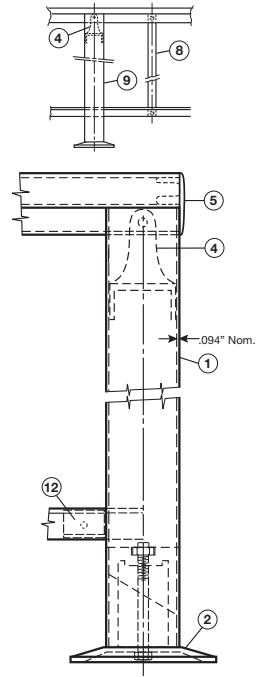
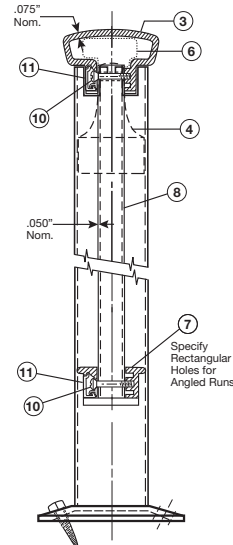
Mounting Options

A variety of mounting options are available to fit any installation requirements. Series 9S Railing can be base mounted with wedge-type or heavy-duty bases, side mounted with brackets or embedded into concrete using an elongated post. End fittings for the top and bottom rail are also available for applications where the railing system meets a wall.



Assembly Identification

SERIES 9S



1. 377 2" Tube .094" Wall
2. 968 Base Assembly
3. 901 Top Rail 2 1/2" w x 1 5/8" h
4. 960X Internal Attachment
5. 980X End Cap
6. 913X Internal Splice
7. 903 Bottom Rail
8. 3/4" Square Picket
9. Section Post
10. 911 Picket Screws
11. 907 Screw Cover
12. Rail Wedge

Series 9SX Herringbone Aluminum Railing

Call Superior Aluminum for details about this exciting new product!



Option A



Option B

MATERIALS

All rails, posts and pickets shall be formed from 6063-T5 & 6063-T6 extruded aluminum alloys. All railing accessories shall be cast from ANSI 713 alloy. All fasteners used in the system shall be aluminum or stainless steel.

INSTALLATION

The railing system can be either base mounted, side mounted or embedded into concrete. Pickets shall run between the top and bottom rail. Pickets shall be 3/4" square on 4 1/2" centers or 1 1/2" x 3/4" on 5 1/4" centers.

SCOPE OF WORK

Aluminum railings as shown on drawings shall be Superior Series 9S Seamless Aluminum Railings, as manufactured and supplied by Superior Aluminum Products, Inc., Russia, Ohio 45363.

Series 9S Railing meets federal safety requirements as determined by an independent testing laboratory. Test results available upon request. Superior Series 9S Railing is protected by US Patent #3707276.

SUPERIOR
ALUMINUM PRODUCTS

555 East Main St. | PO Box 430 | Russia, OH 45363
937-526-4065 | Fax: 937-526-3904
SuperiorAluminum.com
info@superioraluminum.com