

# SUPERIOR

## ALUMINUM PRODUCTS

Meets OSHA, ADA and ICC Safety Criteria

SERIES 9  
Architectural Railing



***Strong, Durable and Maintenance-Free Beauty!***

**[www.superioraluminum.com](http://www.superioraluminum.com)**



# SUPERIOR Architectural Aluminum Railing

*Strong, Durable, and Maintenance-Free Beauty!*

Superior Series 9 Architectural Aluminum Railing offers the finest design features available on the market today. The highest quality aluminum alloy extrusions are used to provide maximum strength and support where it is needed most – in your installation.

Superior Architectural Railing utilizes all the advantages of aluminum: strong, durable, and rust- and corrosion-free. These characteristics make it a practical, sound investment for the budget-minded buyer.

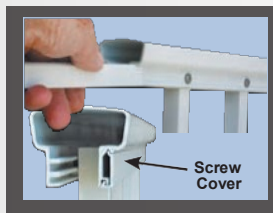
The smart, contemporary design is an added plus. Our unique, no-weld design utilizes simple, cast aluminum fittings or machined openings for a no-hassle, easy installation.

Superior Architectural Railing can be found wherever clean design and safety are a must. It is an excellent choice for condominiums, apartments, hotels, churches, schools, commercial buildings and homes.

To make our railing even more versatile, decorative columns, inserts, and scrolls are available.

Superior Railing is available in any height. Standard heights include 42" for commercial railing, 36" for residential railing, and 72" for pool railing. Superior railing comes in standard 6' lengths, as well as custom lengths, in 2-line or 3-line styles. Ordering standard 6' lengths reduces lead times and cost.

## Concealed Picket Screws



Series 9 Architectural Railing features a screw cover to conceal picket screws on top and

bottom rail assemblies for a cleaner, more streamlined look.



## Finishes

Smart, decorative finishes add a distinctive touch. Whether PPG Duracron paint, anodized, or duranodic, these finishes are guaranteed to endure for years of continued service and maintenance-free beauty.



## Series 9

### 9P and 9W Railing



Rails are inserted into machined post openings.

Series 9P Aluminum Picket Railing features machined post openings on level and ramp railing, eliminating the need for brackets. The result is a clean, rigid design with added strength. If railing is angled horizontally, the angle must be specified so the proper openings can be machined into the post. **Swivel brackets are required for step rail applications.** The top rail has a 2" wide gripping surface which meets all safety criteria. The machined post openings and assembled sections (standard 6' length or custom length) facilitate quick turn-around and overall savings for the customer.

## Top Rail Selections



### Series 9P RAILING

Features 2 1/2" square posts, 3/4" square pickets, and 905 top rail.



### Series 9W RAILING

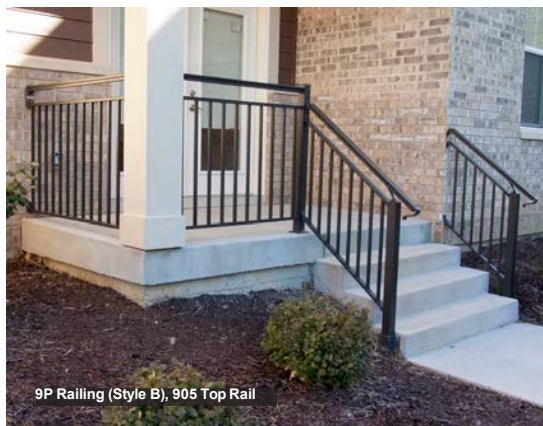
Features 2 1/2" square posts, 1 1/2" x 3/4" pickets, and 905 top rail.

**Note:** All top rail (901, 902, 905), posts (2", 2 1/2", 4"), and pickets (3/4" square, 3/4" x 1 1/2") are interchangeable.

*Superior 9P and 9W Railing meets OSHA, ICC, and ADA criteria.*



9P Railing (Style B), 905 Top Rail



9P Railing (Style B), 905 Top Rail



9W Railing (Style A), 902 Top Rail and Square Fluted Columns



# Railing Style Systems

Superior offers a variety of styles to fit any application.

## Style A Standard Top Rail



## Style B Open Double Top Rail



## Style C Double Top Rail with Through Pickets

Through pickets can be spaced according to your preference. For example; every picket, every 2<sup>nd</sup>, 3<sup>rd</sup>, 4<sup>th</sup> picket, etc.



## Style D Hand Rail (with mtg. brackets)

905 top rail or Superior Series 500 Pipe Rail can be used for hand rail applications.



## Customize your look!

Top rail, bottom rail, pickets, and posts are interchangeable for a completely custom look.

### Interchangeable Top & Bottom Rail

All 901, 902, and 905 top rails are interchangeable. Standard 903 bottom rail can be substituted with 902 top rail. *See examples of 9 Rail below.*



**Option 1**  
905 Top Rail  
903 Bottom Rail

**Option 2**  
901 Top Rail  
903 Bottom Rail

**Option 3**  
902 Top Rail  
903 Bottom Rail

**Option 4**  
902 Top Rail  
902 Bottom Rail



**Option 5**  
905 Top Rail  
903 Bottom Rail

**Option 6**  
901 Top Rail  
903 Bottom Rail

**Option 7**  
902 Top Rail  
903 Bottom Rail

**Note:**  
3/4" sq. pickets  
and 3/4" x 1 1/2"  
pickets are also  
interchangeable.

### Interchangeable Post

All 2" or 2 1/2" square posts can be substituted with a 4" square post.



Machined post openings  
are available for 2 1/2"  
and 4" square posts.  
A 4" machined post  
opening is shown above.

In the Series 9P rail application above,  
4" square posts are used for the end posts and a  
2 1/2" square post is used for the crossover post.





SERIES  
**9P**

**Meets ADA  
Regulations**

## Series 9P Railing

### Well-crafted lines

Superior Series 9 Railing features well-crafted lines and an attractive, innovative design that lends itself well to almost any commercial, industrial, or residential application. It's beauty, strength and durability will enhance the quality of your construction project.

## Series 9W Railing

### Clean, rigid design

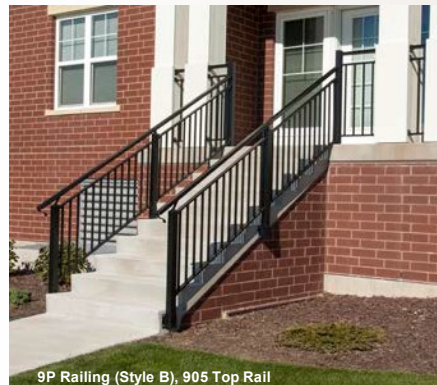
Superior Series W Railing offers all the features of Series 9P Railing, with the addition of 1 1/2" wide pickets. This robust alternative results in a strong, rugged design with a clean, refined appearance.



9P Railing (Style C), 905 Top Rail



**No brackets on level  
and ramp railing!**



9P Railing (Style B), 905 Top Rail



9P Railing (Style A), 905 Top Rail and Series 5 Handrail



9W Railing (Style A) with 902 Top Rail and Superior Aluminum Square Panel Columns



9 Railing (Style A), 905 Top Rail and Series 5 Handrail

9P Railing (Style A), 905 Top Rail



**Swivel brackets are  
required for all step  
rail applications.**





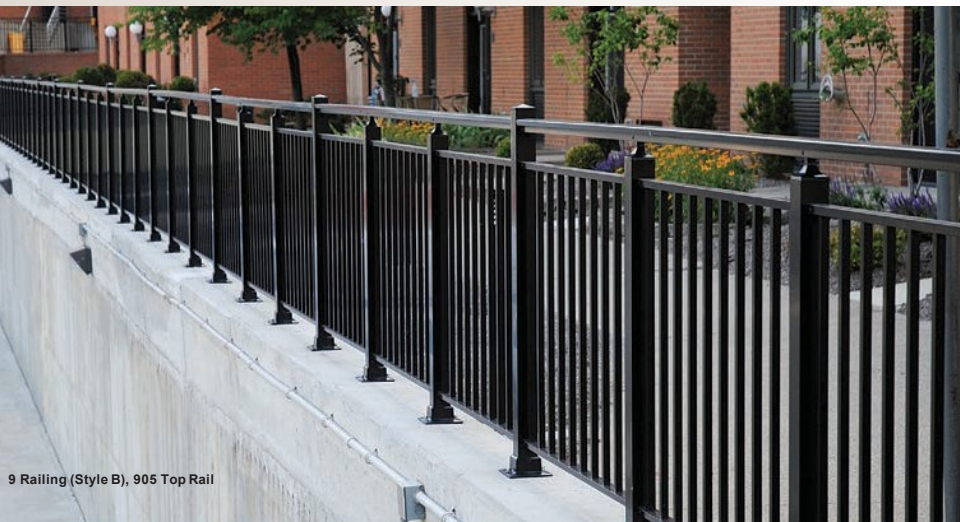
9W Railing (Style A), 902 Top Rail and Superior Aluminum Square Panel Columns



9P Railing (Style A), 901 Top Rail With Square Smooth Columns and Series 7 Fence



9P Railing (Style A), 905 Top Rail and Series 5 Handrail



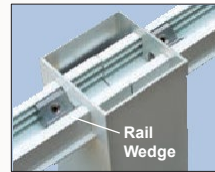
9 Railing (Style B), 905 Top Rail

## Continuous Top Rail

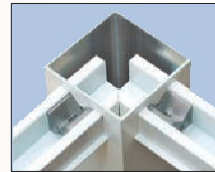


Unlike some other railing companies, Superior manufactures crossover posts for your rail system. The advantage of using these posts is a continuous top rail surface. Not only is this feature attractive, but it also allows for an uninterrupted gripping surface.

## Easy Assembly and Installation!

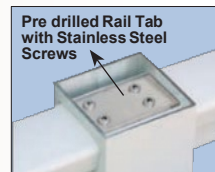


View of the underside of bottom rail to show rail wedge location.



**Series 9P Railing is not only easy to assemble and install, but the machined post openings and factory assembled sections facilitate quick turn-around and cost savings.**

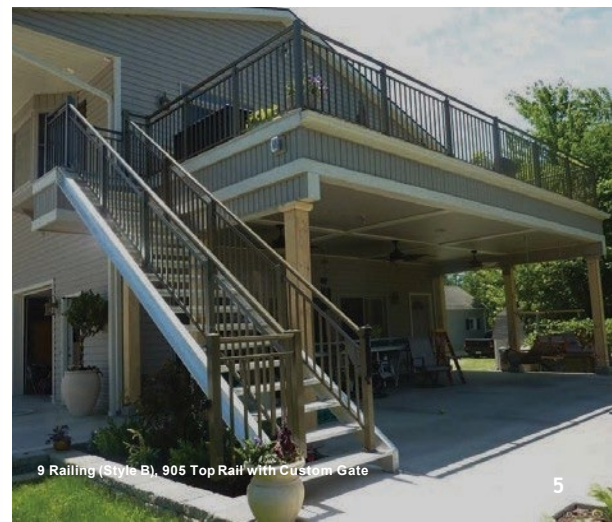
All level and ramp posts are machined with openings to receive the top and bottom rails. As assembled railing is inserted into the openings, a rail wedge located in the bottom rail will ensure proper insertion of 1 1/4" inside the post.



View of the top rail without post cap to show rail tabs.



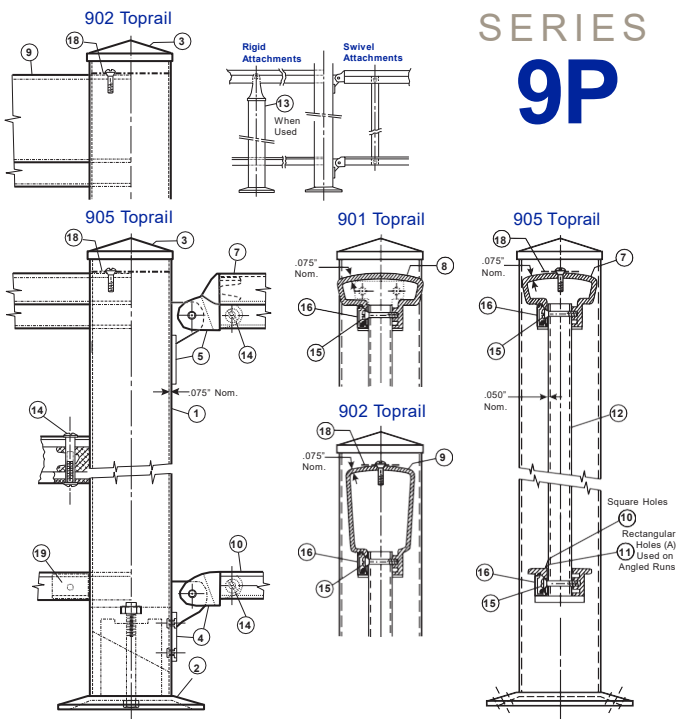
Predrilled rail tabs are provided with the post to connect the top rails. If a railing section or sections need to be shortened, simply saw an equal amount from each railing end with the use of a miter or circular saw. Reinstall and tighten the rail wedge using an 1/8" Allen Wrench on the bottom rail so 1 1/4" protrudes through the post openings. Next, connect the two top rails together with a rail tab, and drive the post cap in place with a rubber mallet.



9 Railing (Style B), 905 Top Rail with Custom Gate

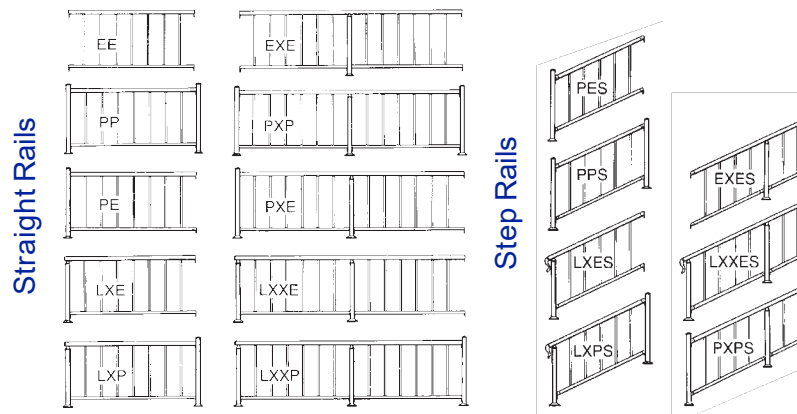


## Assembly Identification

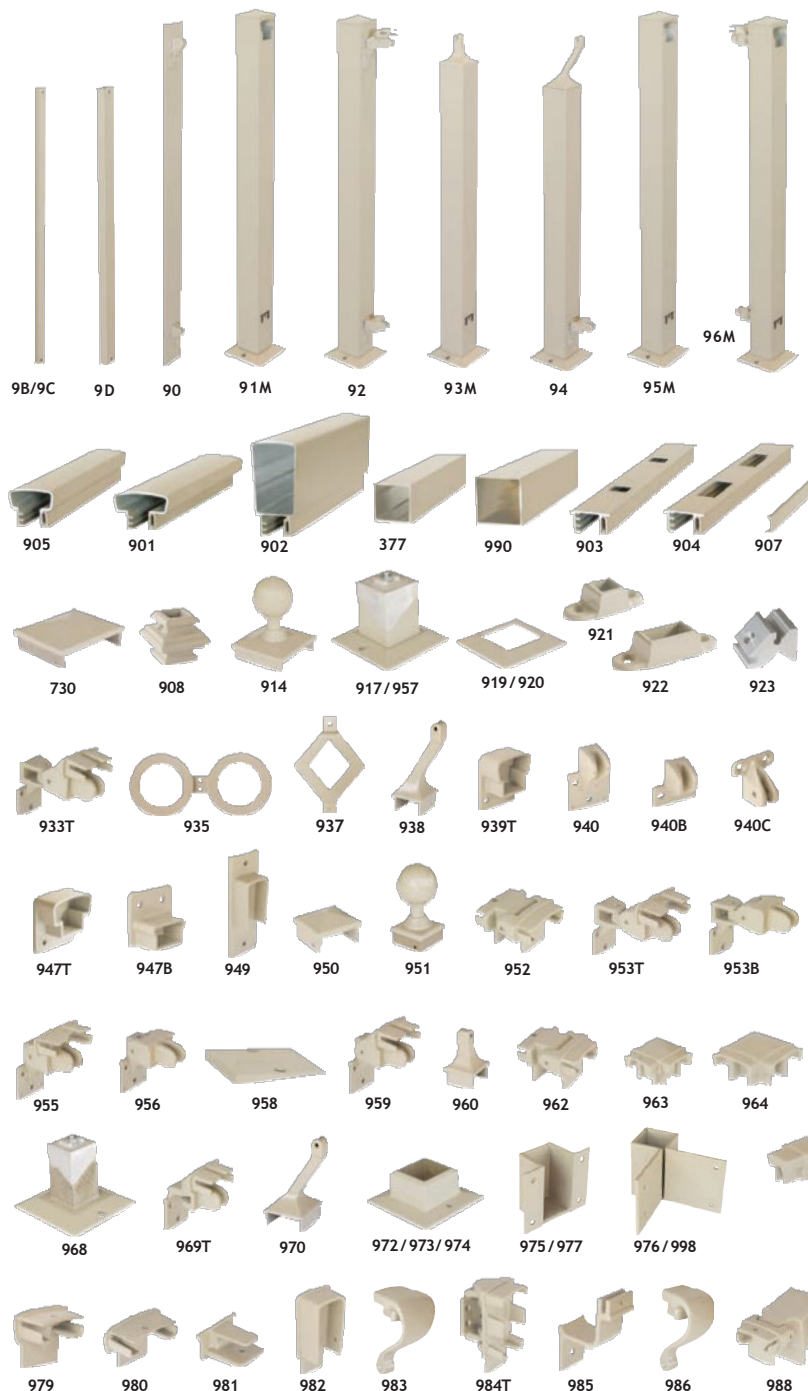


- |                                      |                           |
|--------------------------------------|---------------------------|
| 1. 990 2 1/2" Tube .075" Wall        | 10. 903 Bottom Rail       |
| 2. 957 Base Assembly                 | 11. 904 Bottom Rail (A)   |
| 3. 950 Cap                           | 12. 9B 3/4" Square Picket |
| 4. 956 Bottom Rail Swivel Assem.     | 13. 93M Crossover Post    |
| 5. 955 Top Rail Swivel Assem.        | 14. 912 8-32 Binder Bolt  |
| 6. 940 Top & Bottom Rigid Attachment | 15. 911 Picket Screws     |
| 7. 905 Top Rail 2" w x 1 5/8" h      | 16. 907 Screw Cover       |
| 8. 901 Top Rail 2 1/2" w x 1 5/8" h  | 17. 915 5/32" Dia. Rivets |
| 9. 902 Top Rail 2" w x 4" h          | 18. 924 Rail Tab          |
|                                      | 19. 923 Rail Wedge        |

## Design Selections

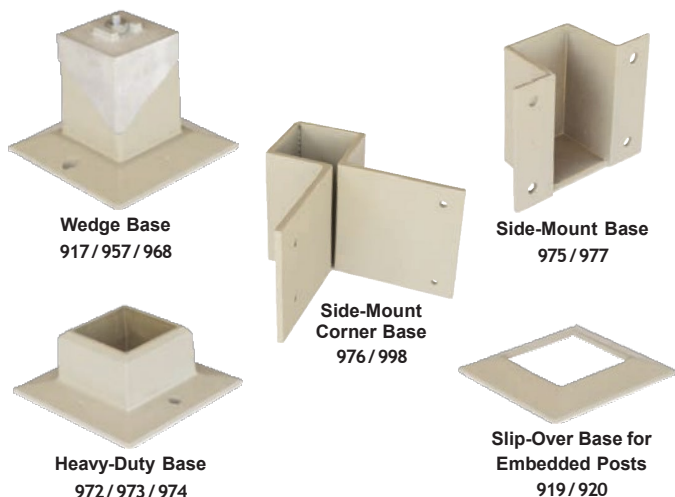


## Component Parts

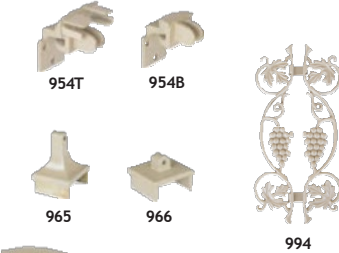
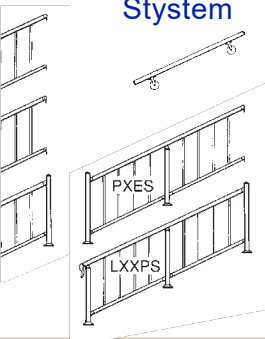


## Base Options

A variety of base options are available to fit any installation requirements. Series 9 Railing can be base mounted with wedge-type or heavy-duty bases, side mounted with brackets, or embedded into concrete using an elongated post with a slip-over base.



## Hand Rail System



## Parts Description

### RAILS

- 901 Top Rail - 2 1/2" w x 1 5/8" h  
18' & 24' Lgths.
- 902 Top Rail - 2" w x 4" h  
18' & 24' Lgths.
- 903 Bottom Rail (Sq. Hole)  
1 5/8" w x 3/4" h, 18' Lgths.
- 904 Bottom Rail (Rect. Hole)  
1 5/8" w x 3/4" h, 18' Lgths.
- 905 Top Rail - 2" w x 1 5/8" h  
18' & 24' Lgths.
- 907 Screw Cover (For Top & Bott.  
Rail) 18' Lgths.
- 909 Bottom Rail (1 1/2" w Hole),  
18' Lgths.

### FASTENERS

- 310 Rail Tab Screw
- 911 Picket Screws
- 912 Rail Bracket Binder Bolt
- 915 Post Bracket Rivet 5/32"

### POSTS & PICKETS

- 9B \_\_\_ Picket 3/4" Sq.- 4 1/2" Centers 9C  
Picket 3/4" Sq.- 6" Centers
- 9D \_\_\_ Picket 3/4" x 1 1/2"
- 90 \_\_\_ Wall Plate
- 91 \_\_\_ End Post (Brackets)
- 91M \_\_\_ End Post (Machined Openings)
- 92 \_\_\_ Swivel Post
- 93 \_\_\_ Crossover Post (Brackets)
- 93M \_\_\_ Crossover Post (Machined Openings)
- 94 \_\_\_ Bottom Step Post
- 95 \_\_\_ Section Post (Brackets)
- 95M \_\_\_ Section Post (Machined Openings)
- 96 \_\_\_ Top Step Straight Post (Brackets)
- 96M \_\_\_ Top Step Straight Post (Machined  
Openings)
- 97 \_\_\_ Intermediate Step Post
- 98 \_\_\_ Corner Post (Brackets)
- 98M \_\_\_ Corner Post (Machined Openings)
- 99 \_\_\_ Top Step Corner Post (Brackets)
- 99M \_\_\_ Top Step Corner Post (Machined  
Openings)

 Specify Railing Height:  
32", 36", 42" or 48"

### BASES

- 917 Wedge Base for 4" Post
- 919 2" Slip Over Base
- 920 2 1/2" Slip Over Base
- 957 Wedge Base for 2 1/2" Post
- 968 Wedge Base for 2" Post
- 972 Heavy-Duty Base for 4" Post
- 973 Heavy-Duty Base for 2 1/2" Post
- 974 Heavy-Duty Base for 2" Post
- 975 Side Mount Brkt. for 2 1/2" Post
- 976 Corner Side Mount Brkt. for 2 1/2" Post
- 977 Side Mount Bracket for 2" Post
- 998 Corner Side Mount Brkt. for  
2" Post

### TUBING

- 990 2 1/2" Sq.- 16' white only & 18' Lgths.
- 377 2" Sq.- 16' white only & 18' Lgths.
- 380 4" Sq.- 16' Length

### CAST FITTINGS

- 730 Cap for 4" Post
- 906 17" Heart Scroll
- 908 Picket Collar
- 913 Internal splice for #905  
Top Rail
- 914 Post Ball Cap for 4" Post  
with  
4" Diameter Ball
- 921 3/4" Square Picket Base
- 922 3/4" x 1 1/2" Picket Base
- 923 Rail Wedge
- 924 Rail Tab
- 929 Cast "X" Insert (4"  
Opening)
- 930 Cast Picket Spear - 4" High
- 933T 2-Way Swivel Bracket - 2"
- 935 3/4" CD Double Ring
- 936 Hanging Rail "L" Brackets
- 937 3/4" Cast Diamond
- 938 Angle Crossover Cap for 2" Step Post
- 939T Adj. End Fitting (for 905)
- 940 End Brkt. for Top & Bottom Rail
- 940B End Brkt. for #903 Bottom Rail
- 940C End Brkt. for 901 Top Rail Only
- 941 17" Cast "Fleur De-Lis" Insert
- 942 Cap for 2" Post
- 943 Post Ball Cap for 4" Post with  
2 1/2" Diameter Ball
- 946 Adj. End Brkt. Top (for 902)
- 947T Adj. End Fitting Top (for 901)
- 947B Adj. End Fitting Bottom
- 949 End Bracket for #902
- 950 Cap for 2 1/2" Post
- 951 Post Ball Cap for 2 1/2" Post
- 952 Top Rail Hinge 2 1/2" w
- 953T 2-Way Swivel Bracket - 2 1/2"
- 953B 2-Way Swivel Bottom
- 954T Horiz. Swivel Brkt. Top - 2 1/2"
- 954B Horiz. Swivel Brkt. Bottom
- 955 Vertical Swivel Top 2 1/2" w
- 956 Vertical Swivel Bottom
- 958 Angle Ramp Plate
- 959 Vertical Swivel Top 2" w
- 960 Crossover Cap for 2" Post
- 962 Top Rail Hinge 2" w
- 963 Top Rail Corner 2" w
- 964 Top Rail Corner 2 1/2" w
- 965 Crossover Cap for 2 1/2" Post
- 966 Crossover Cap for 2 1/2" Post (Flat)
- 969T Horiz. Swivel Brkt. Top - 2" w
- 970 Angle Crossover Cap for 2 1/2" Step Post
- 971 Crossover Cap for 4" Post
- 978L Wall Return - LH for #905 Top Rail
- 978R Wall Return - RH for #905 Top Rail
- 979 End Cap for #905 Top Rail
- 980 End Cap for #901 Top Rail
- 981 End Cap for Bottom Rail
- 982 End Cap for #902 Top Rail
- 983 Lambs Tongue for #901 Top Rail
- 984T Horizontal Swivel for #902
- 985 Wall Brkt. for Handrail
- 986 Lambs Tongue for #905 Top Rail
- 988 90° Double Swivel for #905 Top Rail
- 989 Post Ball Cap for 2" Post
- 992 Post Finial for 2 1/2" Post
- 993 Cast Rose Snap-on Picket Insert
- 994 Cast Grape Snap-on Picket Insert
- 995 Cast Oak Snap-on Picket Insert
- 997 Cast "X" Insert (6" Opening)



9P Railing (Style A), 905 Top Rail,  
and Series 5 Pipe Rail



9P Railing, Open Triple Top Rail, 905 Top Rail



9P Railing (Style B), 901 Top Rail

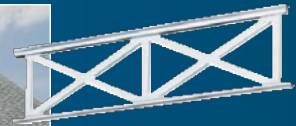


9P Railing (Style B), 901 Top Rail



## Custom Applications

Superior Aluminum offers a variety of custom applications. These include, but are not limited to, attractive gates with custom locks, cast aluminum X-Inserts, an extruded X-Pattern System, and custom rail lengths and heights. Call Superior Aluminum to discuss your needs.

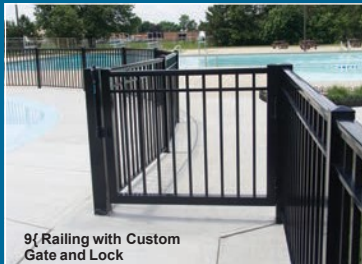


Ask about our extruded X-Pattern System (shown above and to the left) and cast aluminum X-Inserts (shown below).



9P Railing with Custom Gate and Lock

Superior Aluminum manufactures attractive gates with custom locks upon request.



9P Railing with Custom Gate and Lock



9P Railing with Custom Gate and Lock

Ask about Series 9C Cable Railing for a contemporary look.



Series 9C Cable Railing

## MATERIALS - (For 9P, 9W Railing)

All rails, posts, and pickets shall be formed from 6063-T5 & 6063-T6 extruded aluminum alloys. All railing accessories shall be cast from industry standard aluminum alloys according to the requirements of the application. All exposed fasteners used in the system shall be aluminum or stainless steel.

## INSTALLATION -

The railing system can be either base mounted, side mounted or embedded into concrete.

Pickets shall run between the top and bottom rail.

### (For 9P Railing)

Pickets shall be  $\frac{3}{4}$ " square on  $4\frac{1}{2}$ " centers.

### (For 9W Railing)

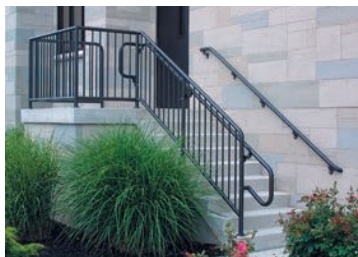
Pickets shall be  $1\frac{1}{2}$ " x  $\frac{3}{4}$ " on  $5\frac{1}{4}$ " centers.

The railing system will adapt to step railing requirements by providing the riser and tread dimensions of the steps and specifying a rectangular hole in the bottom rail.

## SCOPE OF WORK -

Aluminum railings as shown on drawings shall be Superior Series 9P Aluminum Picket Railings, as manufactured and supplied by Superior Aluminum Products, Inc., Russia, Ohio 45363.

Series 9 Railing meets federal safety requirements as determined by an independent testing laboratory. Test results available upon request. Superior Series 9 Railing is protected by US Patent #3707276.



Shown in both photos above: Superior Series 5H Horizontal Aluminum Pipe Railing and Superior Series 5P Non-Welded Aluminum Pipe Picket Railing.

# SUPERIOR

## ALUMINUM PRODUCTS

555 East Main • P.O. Box 430 • Russia, OH 45363  
937-526-4065 • Fax: 937-526-3904

[info@superioraluminum.com](mailto:info@superioraluminum.com) • [www.superioraluminum.com](http://www.superioraluminum.com)

Ask about our complete line of

## Superior Aluminum Products:

- Aluminum Columns – Round (Fluted) & Square (Fluted, Smooth, Panel)
- Fiberglass Columns – Round & Square
- Series 9C Aluminum Cable Railing
- Series 5H Horizontal Aluminum Pipe Railing
- Series 5P Non-Welded Aluminum Pipe Picket Railing
- Series 6 Custom Residential Railing & Columns
- Series 7P Aluminum Picket Fence & Custom Gates
- Series 9S Seamless Aluminum Railing